

MONTHLY MEMBERSHIP PROGRESS REPORT

District 4 L2

Results as of: 3/31/2026

GMT:

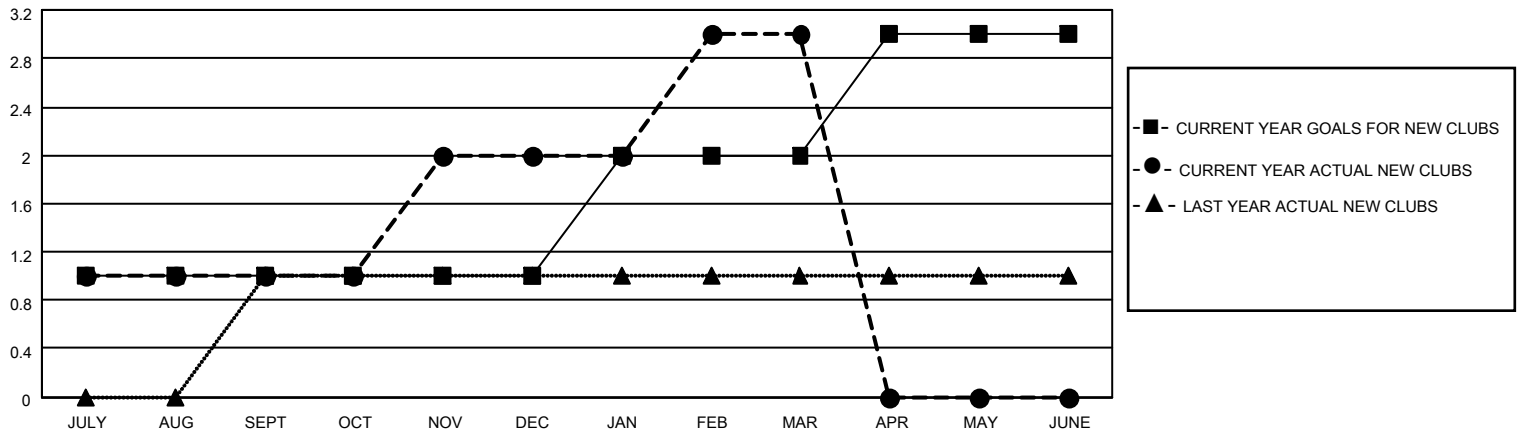
LOCATION CALIFORNIA

GMT CA

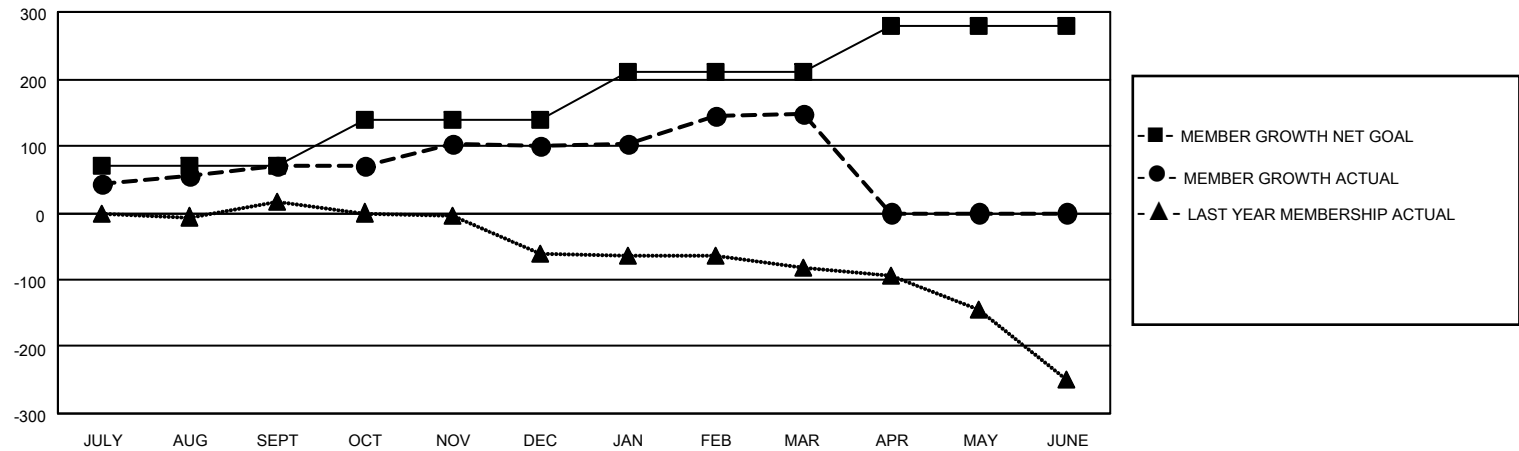
Clubs			
RESULTS FOR 2025-2026			
QUARTER	NEW CLUB GOAL	NEW CLUBS	DROPPED CLUBS
JULY/AUG/SEPT	1	1	0
OCT/NOV/DEC	0	1	1
JAN/FEB/MAR	1	1	1
APR/MAY/JUNE	1	0	0

Members			
RESULTS FOR 2025-2026			
QUARTER	MEMBER GROWTH NET GOAL	MEMBER GROWTH ACTUAL	DROPPED MEMBERS ACTUAL (including transfers)
JULY/AUG/SEPT	70	154	65
OCT/NOV/DEC	70	90	48
JAN/FEB/MAR	70	126	65
APR/MAY/JUNE	70	0	0

GOALS AND ACTUAL NEW CLUBS CUMULATIVE



GOALS AND ACTUAL MEMBERS CUMULATIVE



DROPPED CLUBS: 2	32 CLUBS OF 63 ADDED 1 OR MORE NEW MEMBERS	<u>GENDER DISTRIBUTION</u>	
		MALE	807 (51.01%)
		FEMALE	772 (48.80%)
<u>DROPPED MEMBERS</u>		TOTAL FAMILY UNIT MEMBERS	
DECEASED	10	170	
CLUB CANCELLED	30	FAMILY MEMBERS PAYING HALF DUES	
OTHER	139	89	
TOTAL	179		

[CLICK HERE FOR CUMULATIVE MEMBERSHIP DATA](#)